

Protein Markers

Instruction Manual

- Opti-Protein Marker (~10 kDa - ~175 kDa)
- Opti-Protein XL Marker (~10 kDa - ~245 kDa)
- Opti-Protein Express Marker (~16 kDa - ~100 kDa)
- Opti-Protein Precision Marker (~29 kDa - ~250 kDa)
- Opti-Protein Ultra Marker (~6.5 kDa - ~270 kDa)

Cat.No.: **G252** (Opti-Protein Marker)

G266 (Opti-Protein XL Marker)

G494 (Opti-Protein Express Marker)

G622 (Opti-Protein Precision Marker)

G623 (Opti-Protein Ultra Marker)

Size: 500 μ l (100 loads)

Load: 5 μ l/lane

Storage: 4°C for up to 3 months, -20°C for 24 months



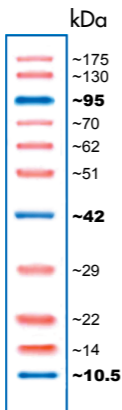
Applied Biological Materials Inc.

www.abmGood.com Tel: 1-866-757-2414

Address: 1-3671 Viking Way,
Richmond, BC, Canada V6V 2J5

Opti-Protein Marker

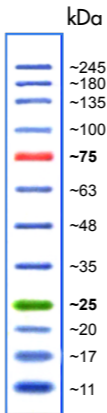
Cat.No.: G252



Tris-Glycine
15%

Opti-Protein XL Marker

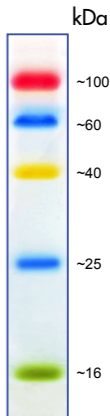
Cat.No.: G266



Tris-Glycine
4~20%

Opti-Protein Express Marker

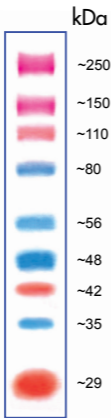
Cat.No.: G494



Tris-Glycine
15%

Opti-Protein Precision Marker

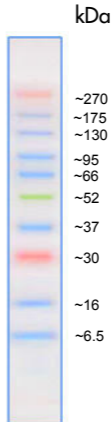
Cat.No.: G622



Tris-Glycine
10%

Opti-Protein Ultra Marker

Cat.No.: G623



Tris-Glycine
4~20%

*Recommended for use with
the Tri-Glycine System only.

abm's protein markers allow you to monitor protein separation during electrophoresis, to estimate or validate the molecular weight of the protein of interest and to evaluate western blot transfer efficiency. Our Opti-Protein Marker Selections provide a choice of protein markers with different ranges, each consisted of proteins that resolve into sharp, tight bands for easy and reliable reference. The marker proteins are strategically colored with different chromophores for easy tracking and identification within your gel or on the blot.

Opti-Protein Marker: ~10 kDa - ~175 kDa (11 bands)

Opti-Protein XL Marker: ~10 kDa - ~245 kDa (12 bands)

Opti-Protein Express Marker: ~16 kDa - ~100 kDa (5 bands)

Opti-Protein Precision Marker: ~29 kDa - ~250 kDa (9 bands)

Opti-Protein Ultra Marker: ~6.5 kDa - ~270 kDa (10 bands)